

Bus and Rail Services in WALSALL

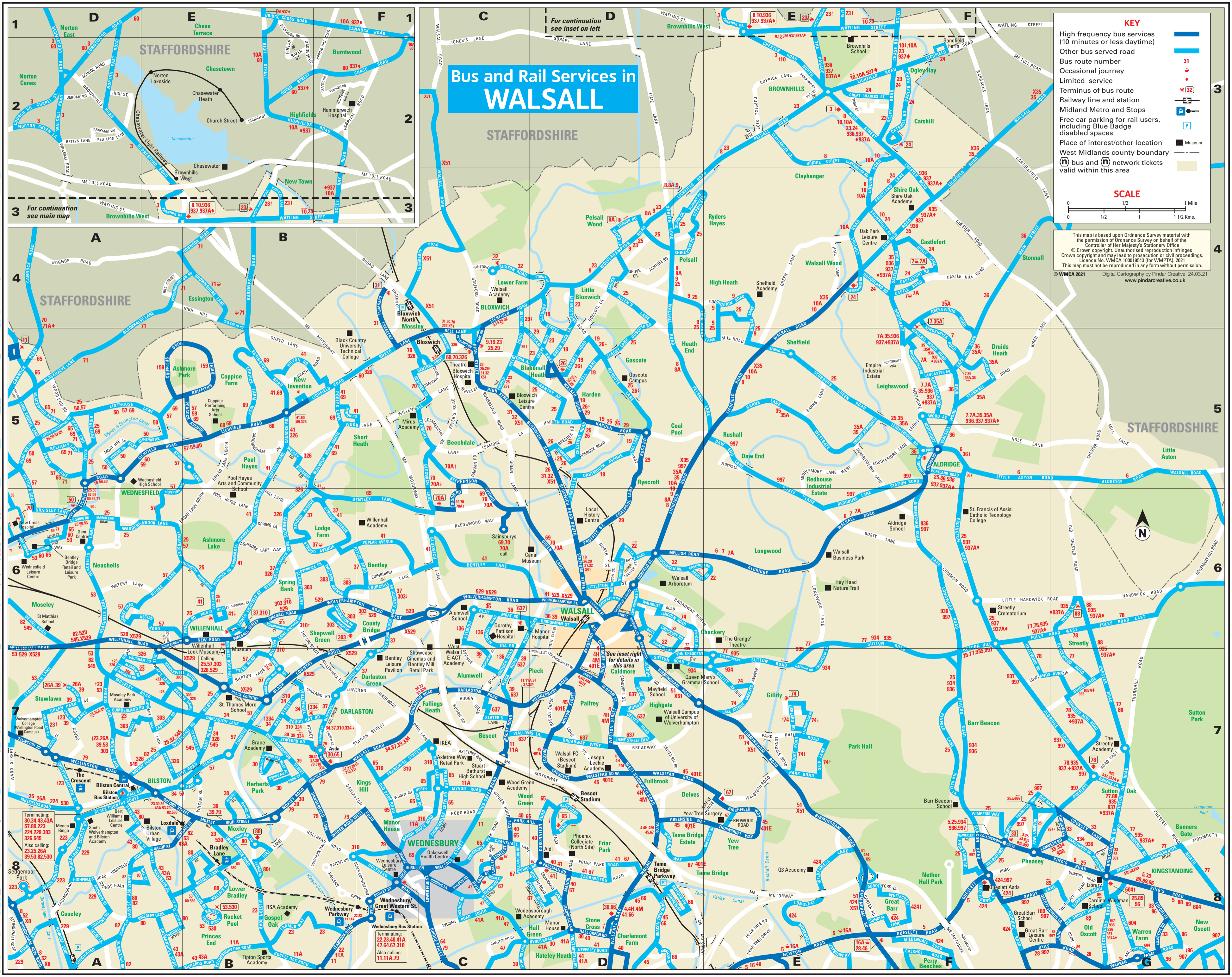
KEY

- High frequency bus services (10 minutes or less daytime)
- Other bus served road
- Bus route number
- Occasional journey
- Limited service
- Terminus of bus route
- Railway line and station
- Midland Metro and Stops
- Free car parking for rail users, including Blue Badge disabled spaces
- Place of interest/other location
- West Midlands county boundary
- (N) bus and (n) network tickets valid within this area

SCALE

0 1/2 1 1 1/2 Miles
0 1/2 1 1 1/2 Kms.

This map is based upon Ordnance Survey material with the permission of Ordnance Survey on behalf of the Controller of Her Majesty's Stationery Office
© Crown copyright. Unauthorised reproduction infringes Crown copyright and may lead to prosecution or civil proceedings. Licence No. WMCA 100019543 (for WMPTA). 2021
This map must not be reproduced in any form without permission.
© WMCA 2021 Digital Cartography by Pindar Creative 24.03.21 www.pindarcreative.co.uk



For continuation see inset on left

For continuation see main map

See inset right for details in this area
Caldmore

Terminating: 30.34.43.43A
57.80.22.23
224.229.303
326.545
Also calling: 23.25.26A
39.53.82.530

Terminating: 22.23.40.41A
47.64.67.310
Also calling: 11.11A.79