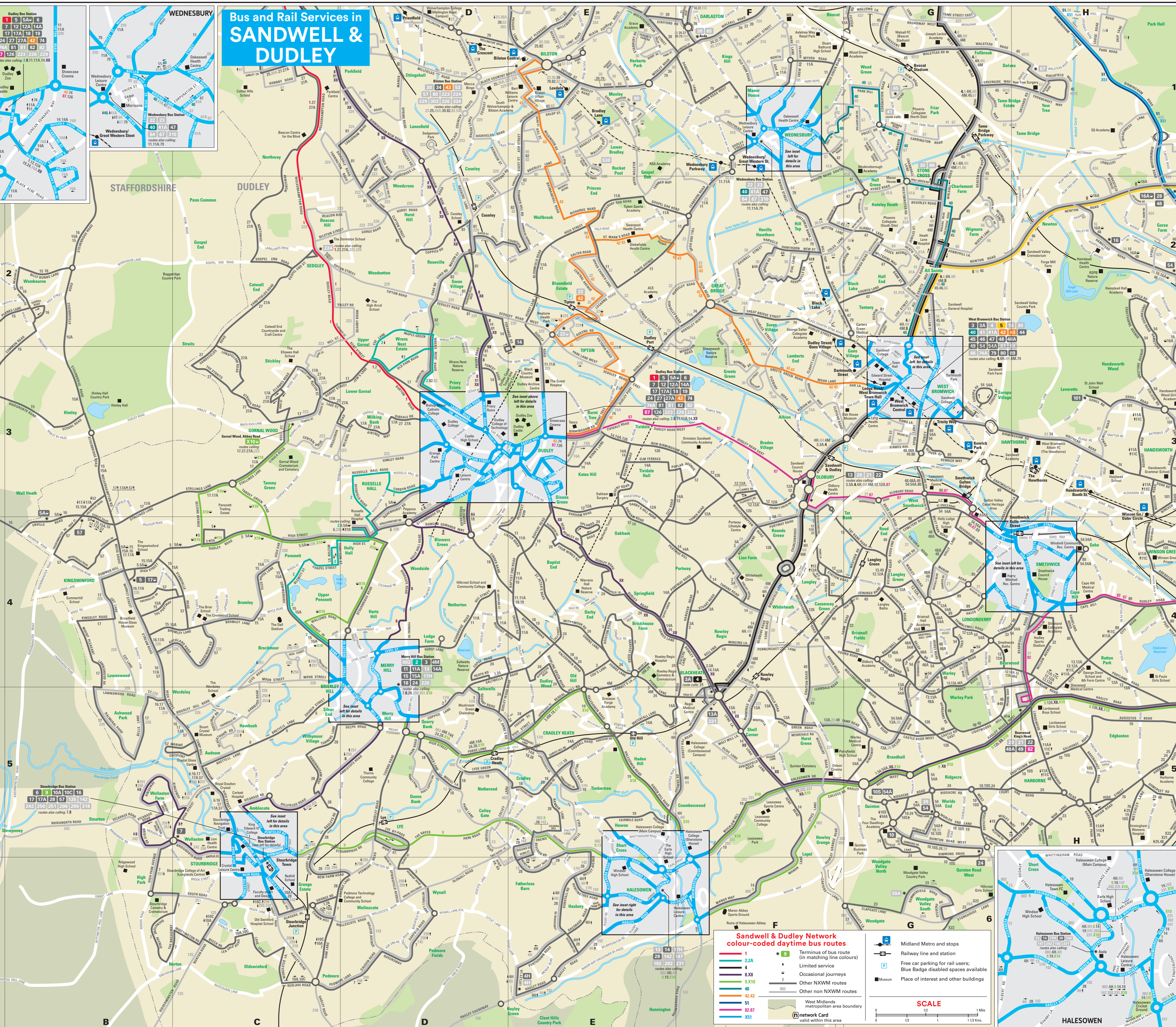
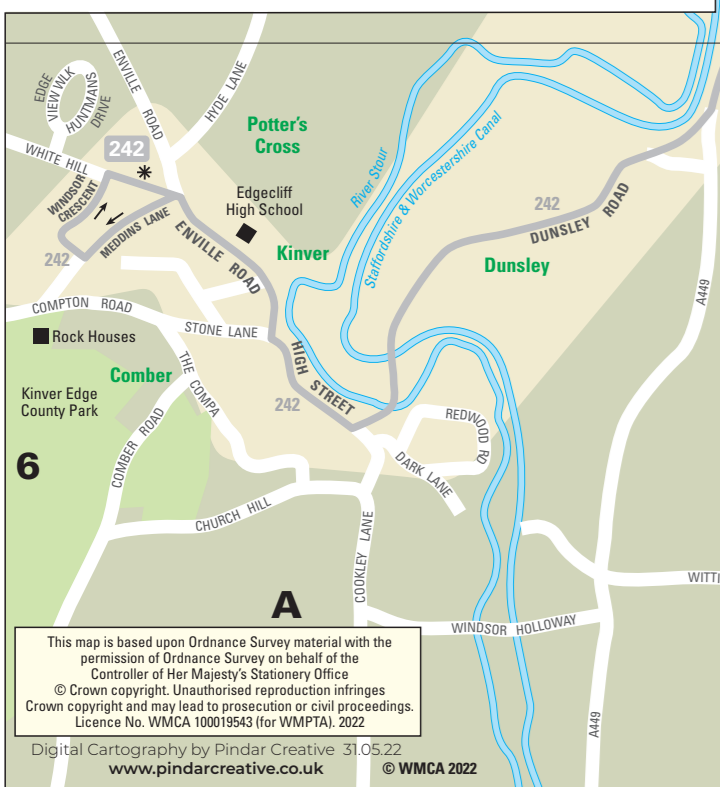
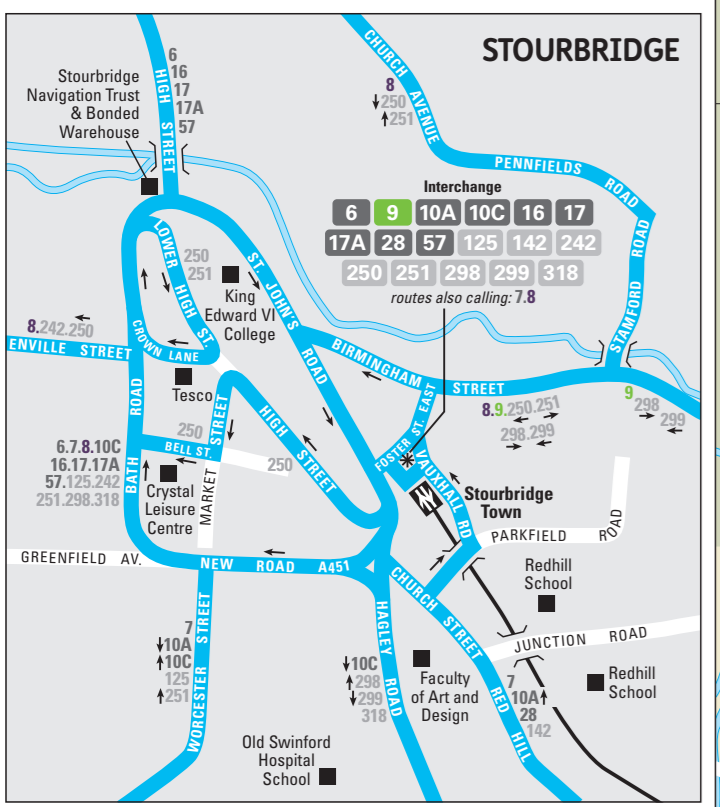
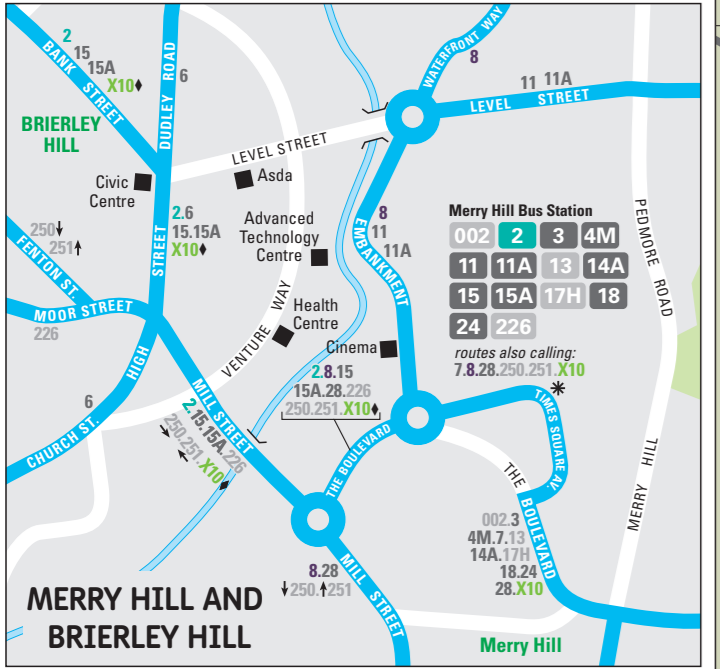
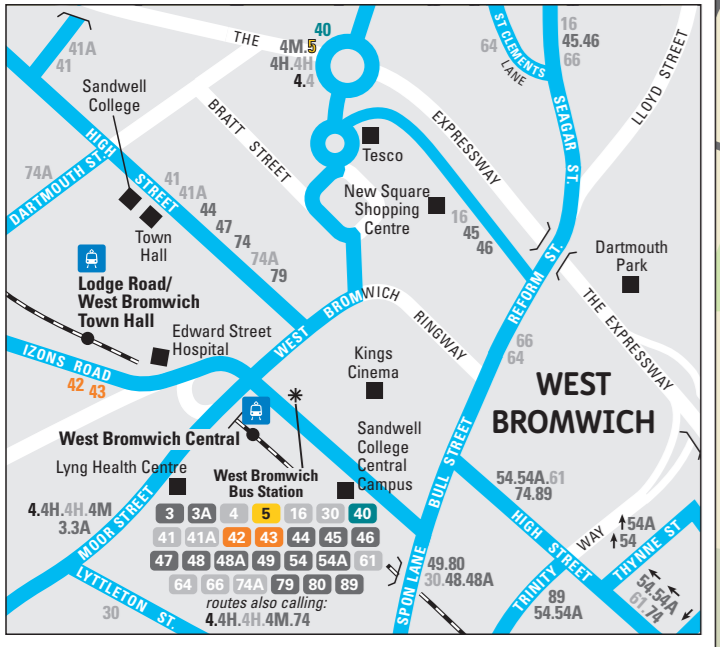
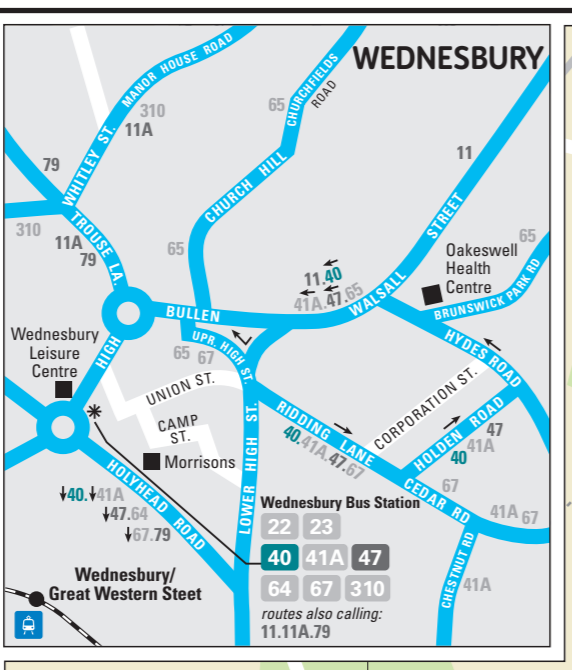
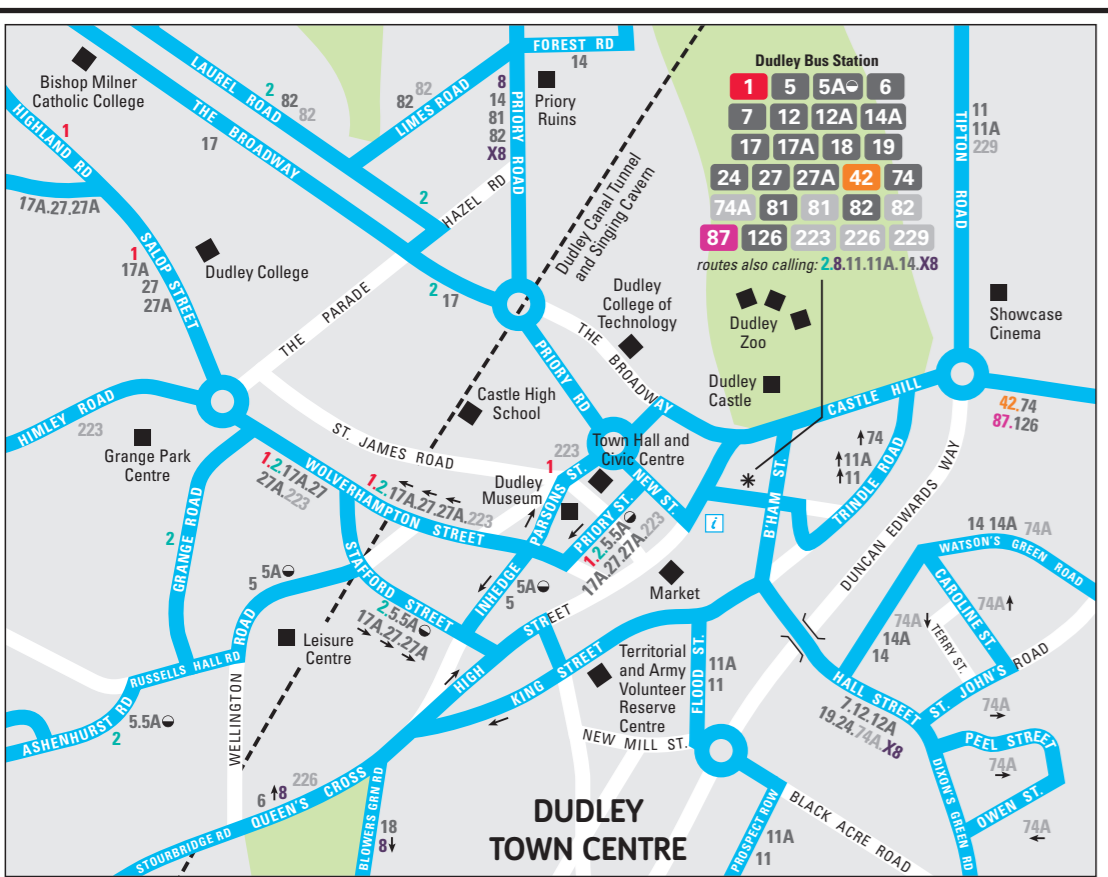


Bus and Rail Services in SANDWELL & DUDLEY



Sandwell & Dudley Network colour-coded daytime bus routes

- 1 (red)
- 2A (orange)
- 4 (green)
- 8XB (dark green)
- 9.1X10 (light green)
- 42.43 (yellow)
- 61 (purple)
- 87 (pink)
- 51 (blue)
- X51 (light blue)

18 (red) Terminus of bus route (in matching line colours)
 19 (orange) Limited service
 20 (green) Occasional journeys
 21 (dark green) Other NXWM routes
 22 (light green) Other non NXWM routes
 23 (yellow) West Midlands metropolitan area boundary
 24 (purple) Network Card valid within this area

- Midland Metro and stops
- Railway line and station
- Free car parking for rail users; Blue Badge disabled spaces available
- Place of interest and other buildings

SCALE

0 0.2 0.4 0.6 0.8 1 1.2 Miles

0 0.2 0.4 0.6 0.8 1 1.2 Kilometres

This map is based upon Ordnance Survey material with the permission of Ordnance Survey on behalf of the Controller of the Major's Stationery Office. Crown copyright and may be reproduced or used in any form without the permission of HM Stationery Office. © Crown Copyright and the Ordnance Survey. Digital Cartography by Pindar Creative. © 2022 www.pindarcreative.co.uk